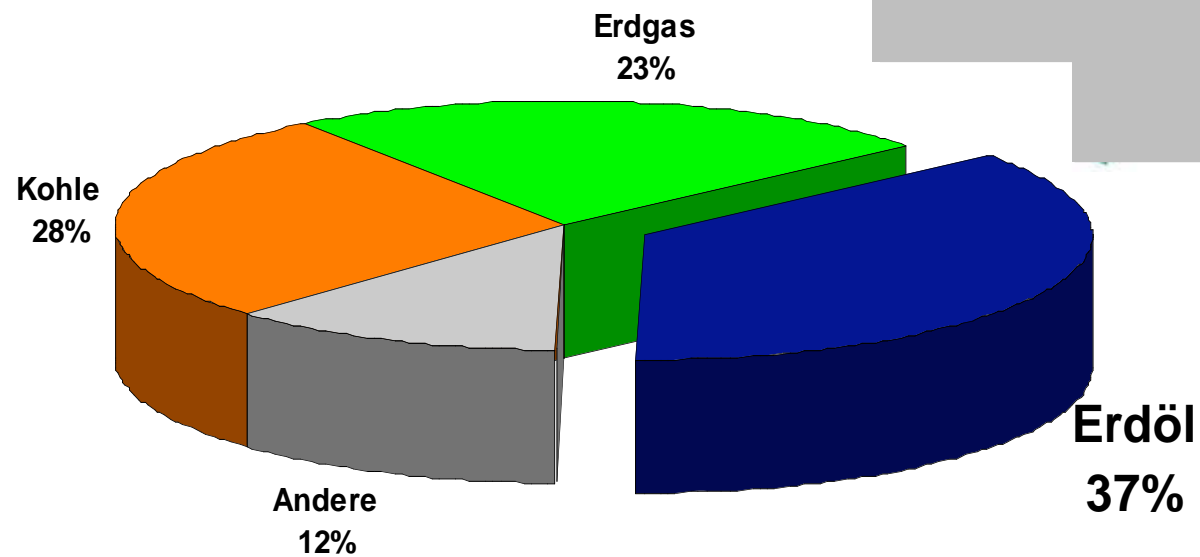


Entwicklung der weltweiten Energiepreise



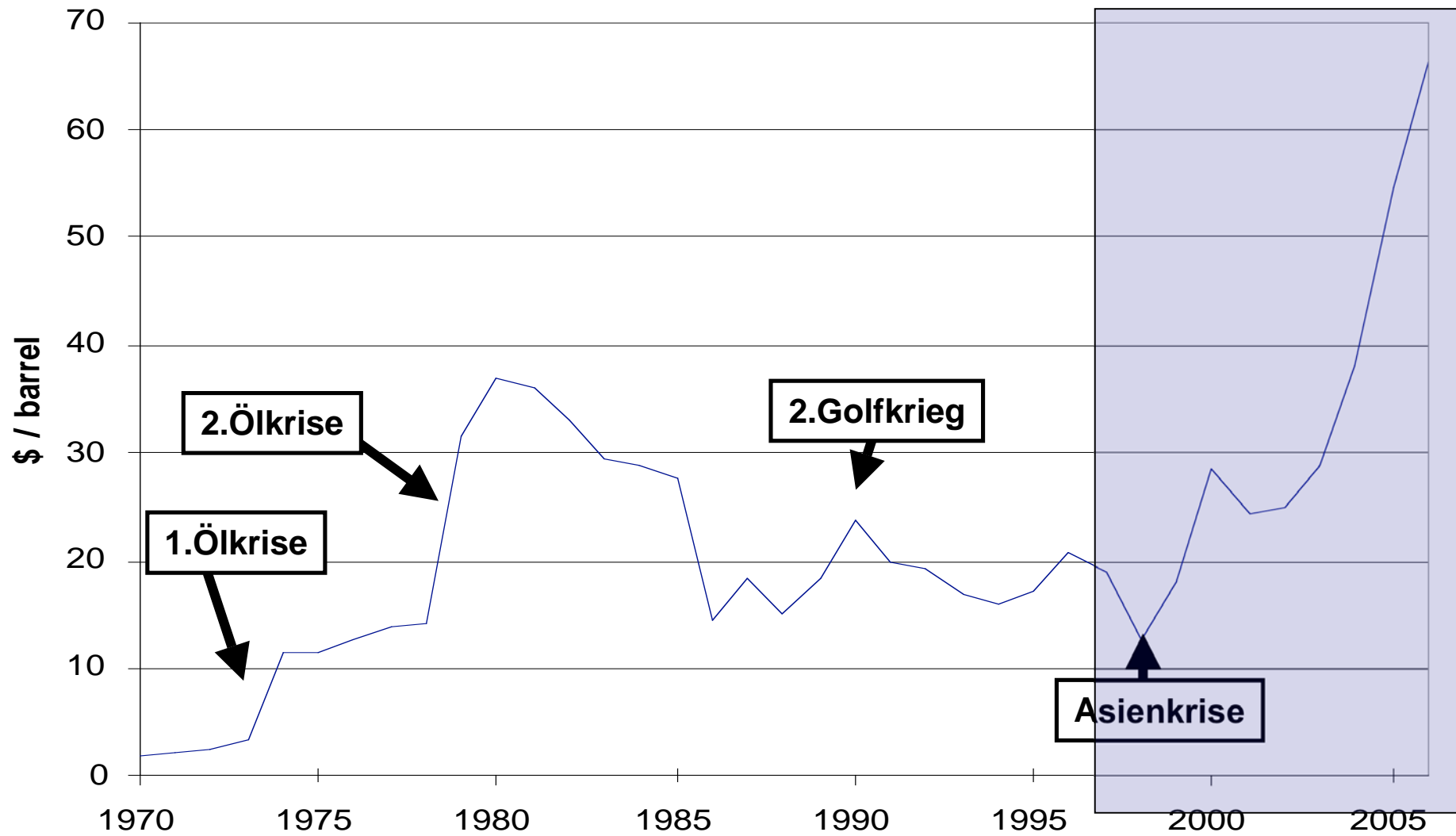
Erdöl, Erdgas, Kohle und Strom

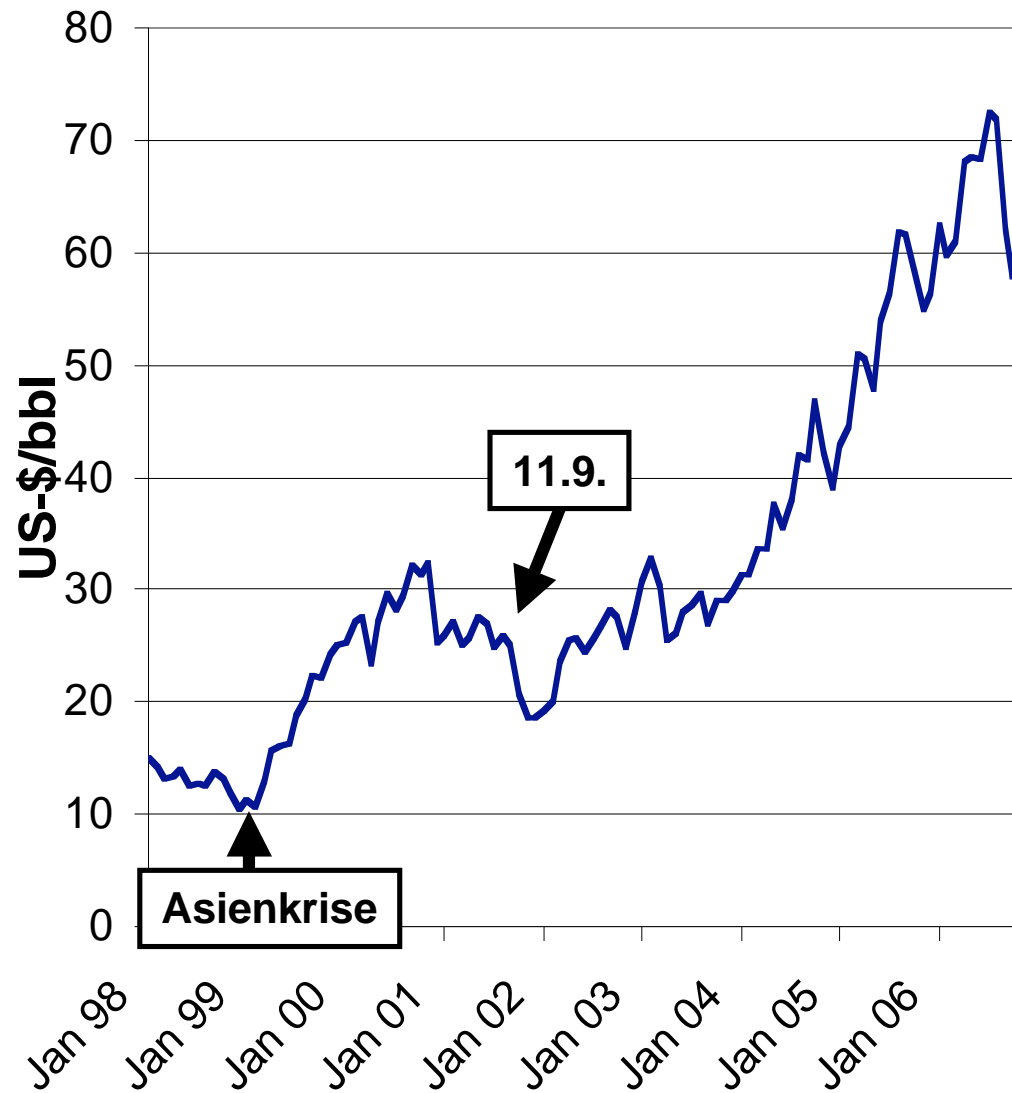


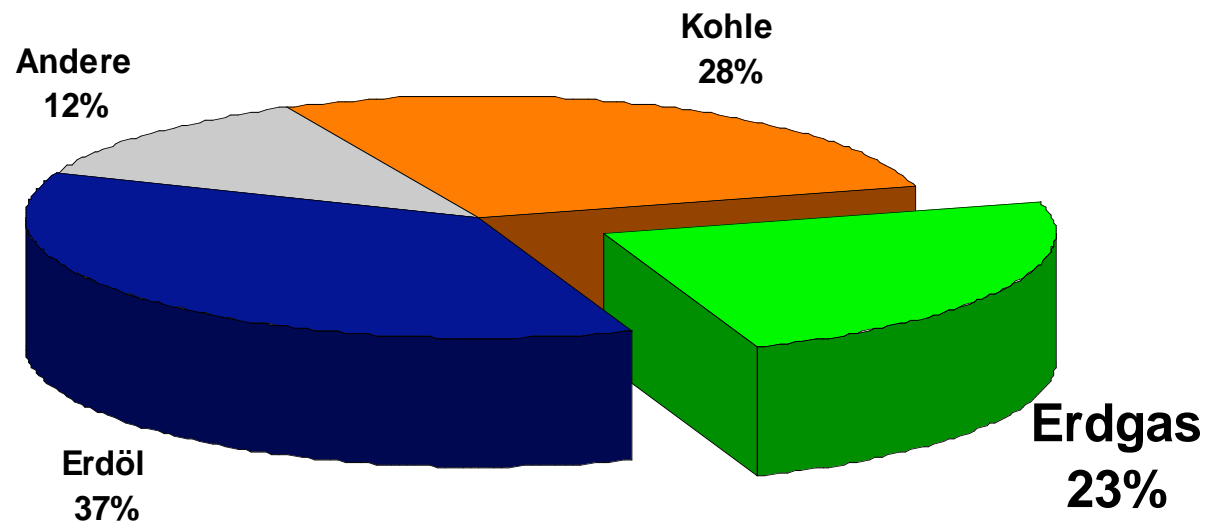
Quelle: BP

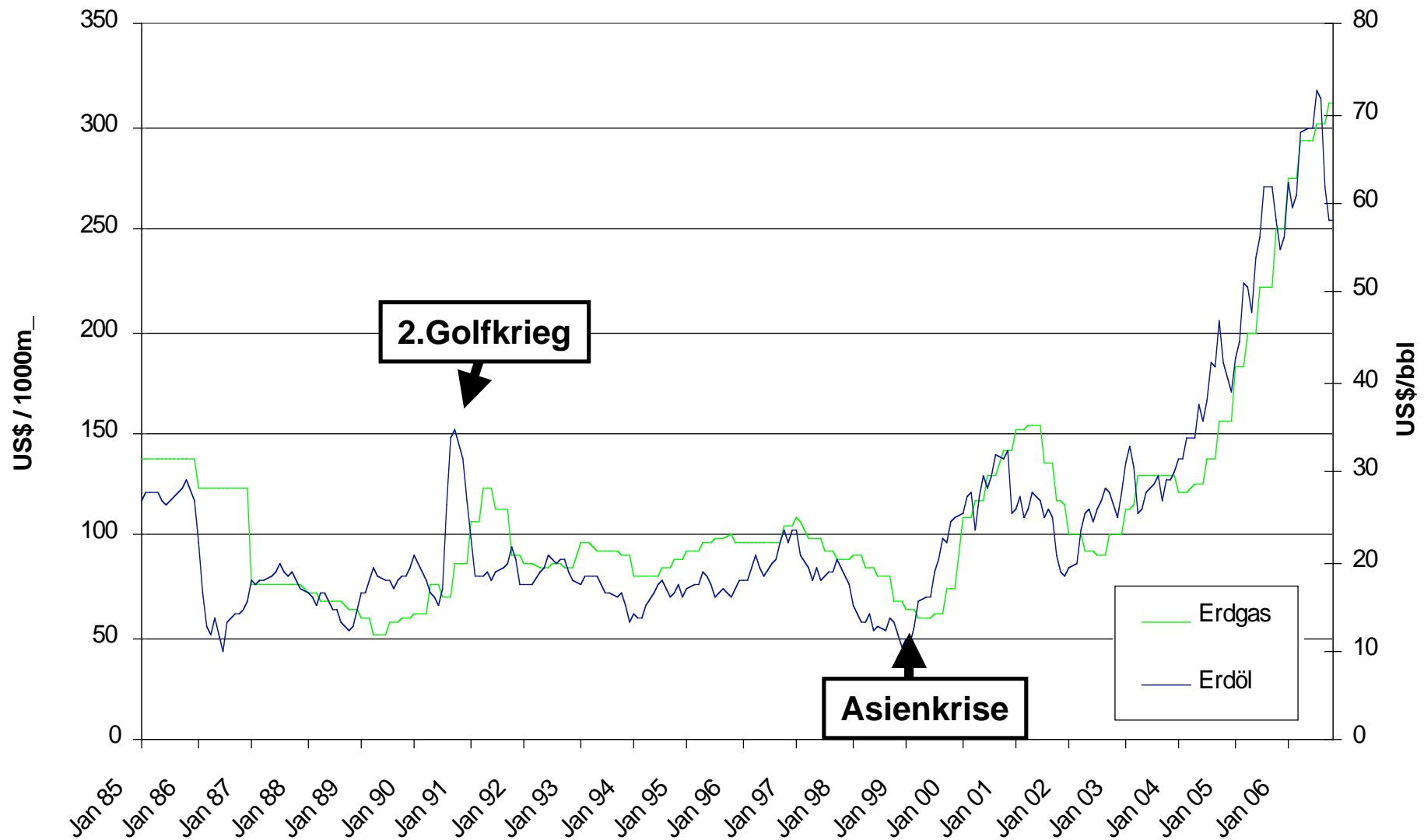


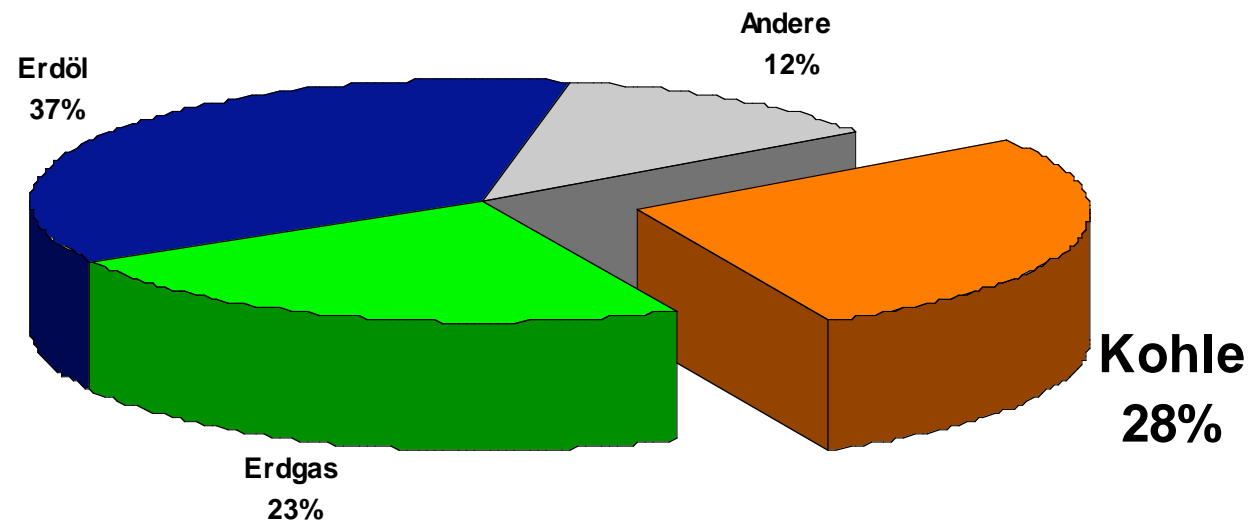
Anteil an der weltweiten Ölförderung: 40% – 55%



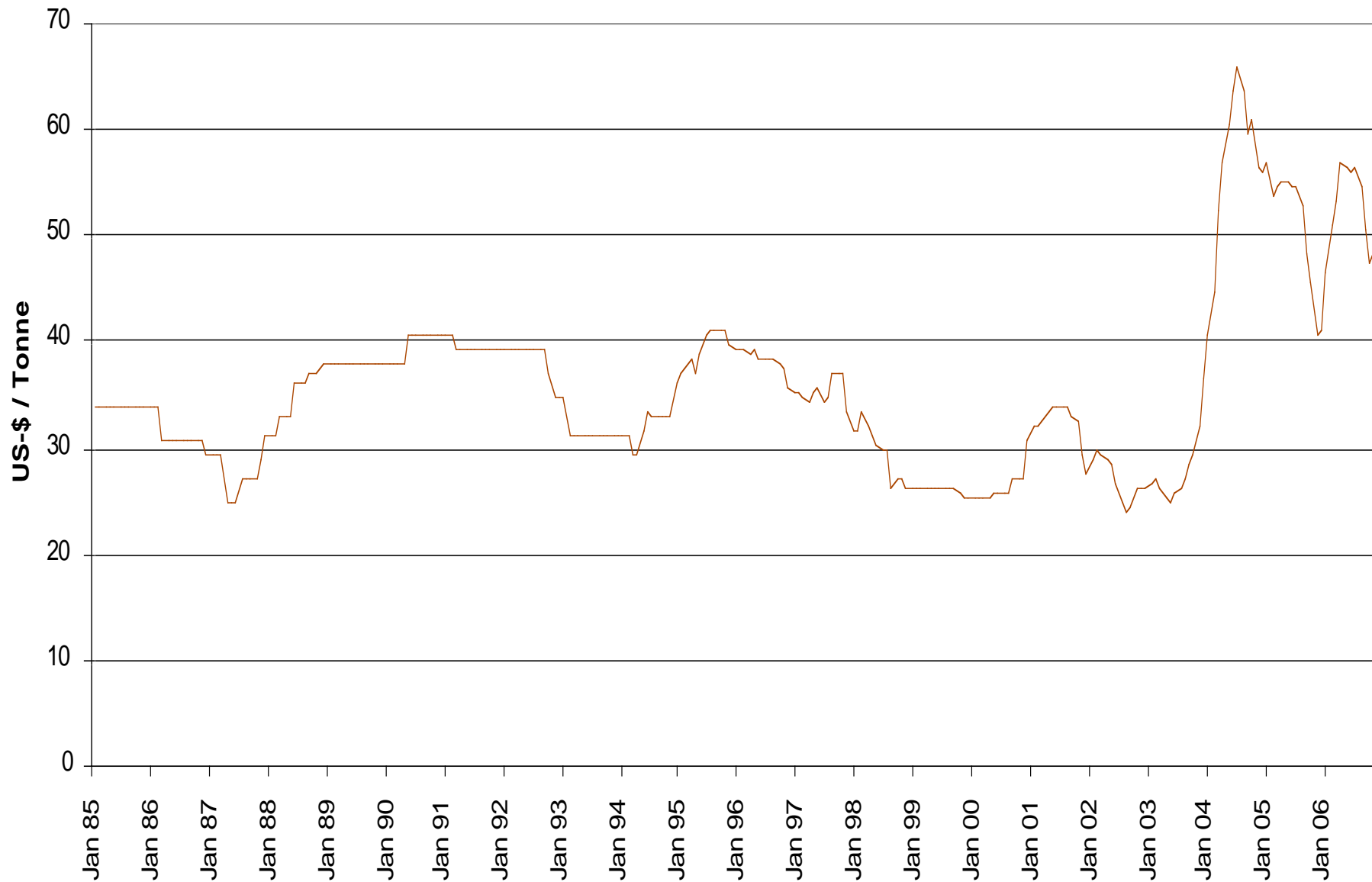


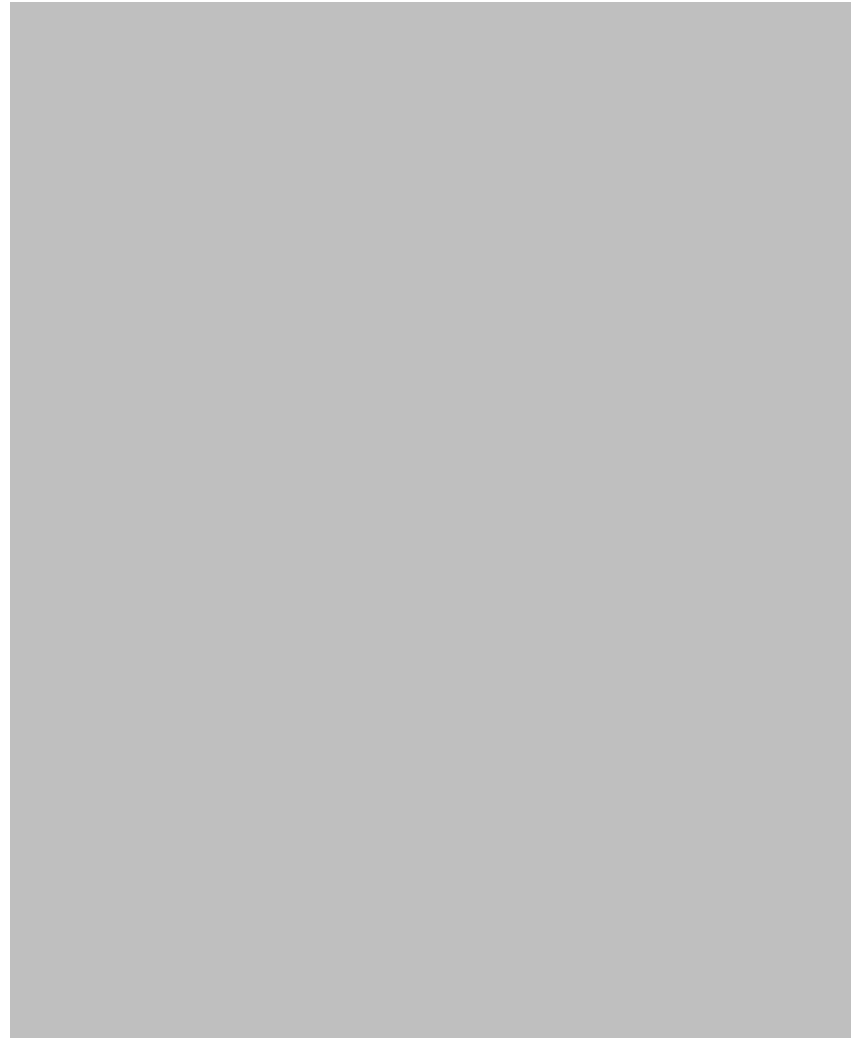


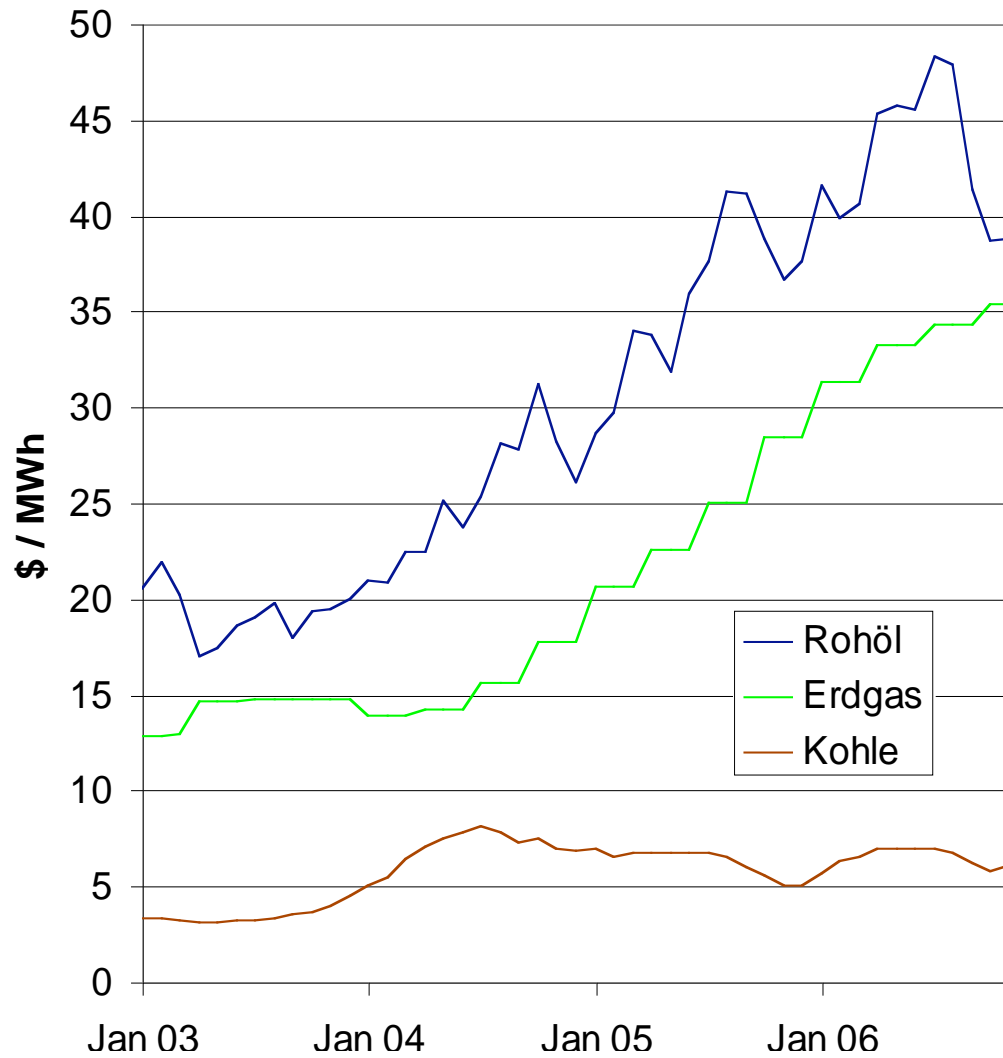




Kesselkohlenpreis – 1985 bis 2006







Preiszunahme

Januar 2003 – November 2006:

Öl: + 88%

Erdgas: + 176%

Kohle: + 85%